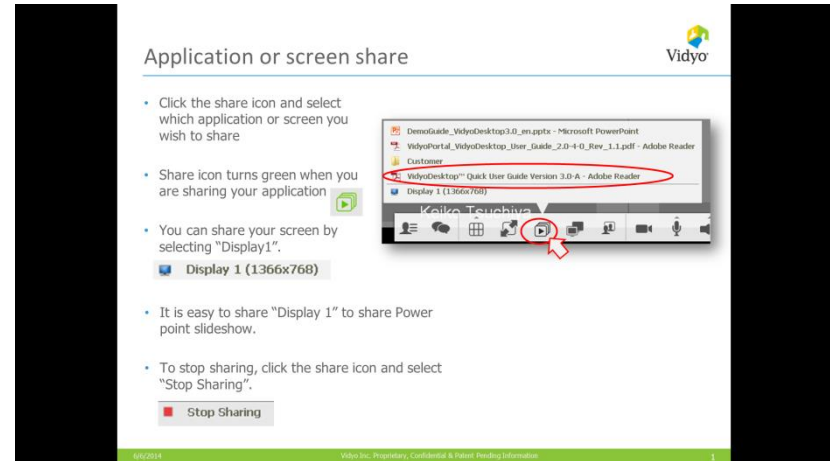


# Differences of view on your PC by way of sharing

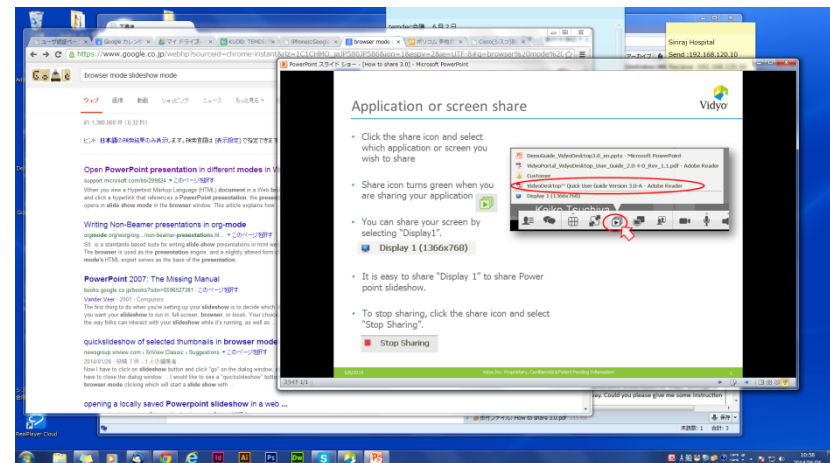
## Way 1.

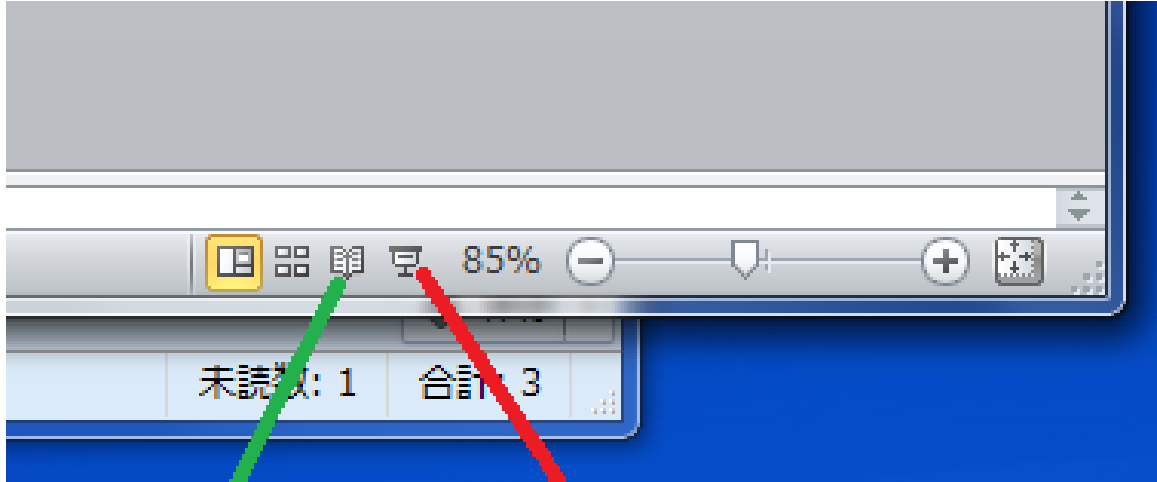
Share "Display" and run slideshow in full-screen mode



## Way 2.

Share "PowerPoint" application and run slideshow in window mode





Window mode

Full-screen mode

# 1. Share "Display" and run slideshow in full-screen mode

- When you share "Display" on VidyoDesktop, you need to run slideshow in full-screen mode.
- Because if you run in window mode, it causes a fractal images on Vidyo.
- PowerPoint tends to be configured for full-screen mode by default. So when people start from slideshow tab on the top, it often start in full-screen mode.
- You can change full-screen/window mode at the setting of slideshow.
- Also you can start from the icon on the bottom of PowerPoint. Refer to the attached "icon for slideshow.png"

## **2. Share "PowerPoint" application and run slideshow in window mode**

- When you share "PowerPoint" application on VidyDesktop, you need to run slideshow in window mode.
- Because if you run in full-screen mode, you just share the normal display of powerpoint and people cannot see your slideshow on VidyDesktop.
- If your PowerPoint is configured for window-screen mode by default, you can start from the slideshow tab on the top.
- You can also start it in window mode from a book icon on the bottom of PowerPoint.
- You can adjust the size and proportion of slideshow on Vidy by adjusting the window of slideshow on your desktop.